

NAKHE NEWSLETTER

October 2023

Important Deadlines on October 15th!!

Reminder to Vote in NAKHE Election

You are reminded to vote in the National Association for Kinesiology in Higher Education 2023 Elections.

The voting deadline is 11:59 pm (Pacific Time) on October 15, 2023.

We are using an online election system to tabulate our votes.

Please check your email for your unique voting link! [You can click here to learn more about the candidates.](#)

If you have election questions, feedback or want to be removed from future ballot lists, please email Donna Woolard at admin@nakhe.org.



Early Bird Deadline for NAKHE's 2024 Annual Conference!

The Early Bird Registration Deadline is October 15th! [Click Here](#) to register at the discounted rate!



NAKHE 2024

EXPANDING BEYOND OUR BORDERS

Join Us
**2024 NAKHE
CONFERENCE**
PHOENIX, ARIZONA
JANUARY 3 – 5, 2024

The theme of the 2024 Conference is Expanding Beyond Our Borders to explore new perspectives nationally, internationally and into areas of kinesiology and higher education not traditionally thought of as being served by NAKHE.

SCAN CODE FOR MORE INFORMATION!



PROPOSAL SUBMISSION DATES:
April 1–August 1, 2023

CONTACT:
**Shelley Holden, Vice President
Conference Planner**
sholden@southalabama.edu
251-461-1611

National Association for Kinesiology
in Higher Education
<https://www.nakhe.org/>



CLICK HERE

To view the 2024 Conference Schedule

A MESSAGE FROM THE VICE PRESIDENT, DR. SHELLEY HOLDEN

Dear Members,

We are looking forward to seeing everyone in Phoenix in January. We have a great, hefty lineup of speakers and sessions. The full Program of Events for the conference is posted [here](#).

- Early bird registration ends on **October 15th**
- Our room block is selling out quickly. [Here is the link to book your room\(s\) at The Hyatt Regency](#).
- We hope members will consider staying through the weekend and exploring the sites & sounds of Phoenix. The NAKHE room rate is good Tuesday-Sunday.



2024 NAKHE Conference attendees: Here are some ways to EXPLORE PHOENIX! 😊



Scottsdale desert



Horseback Riding



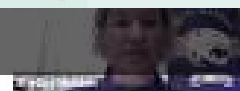
Play Golf



Things to Do in Phoenix, AZ (NAKHE 2024 Conference)



Things to do in Phoenix, AZ



1. Hike Camelback Mountain

▪ [Climb Camelback – Camelback Mountain Hiking Information | Phoenix, AZ](#)

- [Desert Botanical Garden in Phoenix, Arizona \(dbg.org\)](http://dbg.org)

3. Phoenix Zoo

- [Home - Phoenix Zoo](#)

4. Old Town Scottsdale with shopping, restaurants, and pubs (11 miles or 23 minutes from conference hotel)

- [10 Fantastic Things To Do In Old Town Scottsdale | TravelAwails](#)

5. Museums (Musical Instruments, Science, American Indian Art and others)

- [10 Best Museums In Arizona That You Ought To Visit! \(traveltriangle.com\)](#)



Meet our NAKHE Member of the month: Frank J. Fedel

Frank J. Fedel

Professor | Virtual Reality, 3D printing/scanning, Digital-analog integration, Technology in Sports and Medicine, Biomechanics, Gait Analysis, Kinetics, Research Methods

Affiliation: Eastern Michigan University (USA)

Why are you a NAKHE member? What a great group of people! Everyone is constantly interested in moving the organization (and Kinesiology in general) forward.

NAKHE Member Highlight Form

The NAKHE Marketing Committee would like to highlight our members in our social media and newsletter! Please fill out the information [on this form](#) to be considered as our next featured member. If you have any questions, please contact Kanae Haneishi (the committee chair) at khaneishi@western.edu.

Thank you so much!

Sincerely,

NAKHE Marketing Committee





Get Published!

Please consider submitting an article to [#NAKHE](https://www.nakhe.org/) 's Journals-

IJKE -

<https://www.nakhe.org/submit-to-the-journal.html>

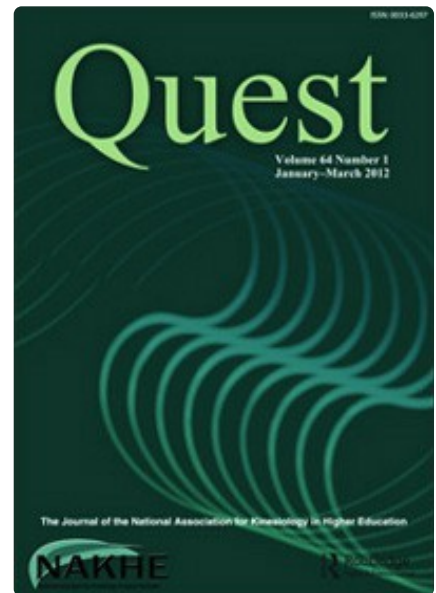
Quest -

<https://www.nakhe.org/submit-to-quest.html>



Featured Article

Tyler A. Wood, Nicholas E. Grahovec, Catrina M. Sanfilippo, Christopher Hill & Elizabeth A. Gockel-Blessing (2023) A Creative Medical Investigation: Bridging the Soft Skill Gap, International Journal of Kinesiology in Higher Education, 7:3, 219-230, DOI: [10.1080/24711616.2022.2113347](https://doi.org/10.1080/24711616.2022.2113347)



Featured Article

Jim Denison & Pirkko Markula (2023) Social Theory and Movement Skill Learning in Kinesiology, Quest, 75:2, 97-102, DOI: [10.1080/00336297.2023.2181830](https://doi.org/10.1080/00336297.2023.2181830)

OPERA (Opportunities in Physical Education and Related Areas) Jobs

Looking for a career move?

Check out the [NAKHE website](https://www.nakhe.org/) for current job openings at higher education institutions. The most recent position postings are listed below.





PennState

Head, Department of Kinesiology

The Pennsylvania State University (Penn State) College of Health and Human Development (HHD) seeks a visionary, collaborative, and inclusive leader to serve as the next Head of the Department of Kinesiology. Applications, inquiries, and nominations are invited.

UNIVERSITY OF
Nebraska
Omaha



Assistant/Associate Professor of Kinesiology

The School of Health and Kinesiology at the University of Nebraska at Omaha invites applications for a tenure-track faculty position at the rank of assistant or associate professor in Kinesiology.



UNIVERSITY OF MINNESOTA

Assistant Professor | Health Disparities & Kinesiology

The School of Kinesiology in the College of Education and Human Development at the University of Minnesota seeks to fill a tenure-tenure track Assistant Professor position.

[LinkedIn](#) | [Instagram](#) | [Facebook](#) | [Twitter](#)



Tag NAKHE



#NAKHE

Please use Hashtag

#NAKHE

We want to celebrate and share your work

Have Exciting News?

We have now a link for the members to send us their information for our social media: [Share Your News Here!](#) Our members can use this form to send us the information that they want us to announce on our social media. For example, if they are presenting at a conference, they can send us the information!



NAKHE Newsletter



The purpose of the NAKHE Newsletter is to send updated information to NAKHE members and friends. Much of the information overlaps with our social media sites. If you have any questions and comments, feel free to reach out to NAKHE at admin@nakhe.org.

