

NAKHE NEWSLETTER

November 2023

Register for NAKHE's 2024 Annual Conference!

It is not too late to register for the 2024 Annual Conference! Click [HERE](#) to sign up!



NAKHE 2024
EXPANDING BEYOND OUR BORDERS

Join Us
**2024 NAKHE
CONFERENCE
PHOENIX, ARIZONA
JANUARY 3 – 5, 2024**

The theme of the 2024 Conference is Expanding Beyond Our Borders to explore new perspectives nationally, internationally and into areas of kinesiology and higher education not traditionally thought of as being served by NAKHE.

SCAN CODE FOR MORE INFORMATION!



PROPOSAL SUBMISSION DATES:
April 1–August 1, 2023

CONTACT:
**Shelley Holden, Vice President
Conference Planner**
sholden@southalabama.edu
251-461-1611

**National Association for Kinesiology
in Higher Education**
<https://www.nakhe.org/>



[CLICK HERE](#)

A SHORT MESSAGE AND VIDEO MESSAGE FROM THE VICE PRESIDENT, DR. SHELLEY HOLDEN

Looking forward to the Conference in January! You can register for the conference now and until you are on-site in Phoenix!

NAKHE- Conference Updates_11.13.2023

- Phoenix Zoo
- Phoenix Zoo
- Museums (Musical Instruments, Science, American Indian Art and others)
- 30 Best Museums in Arizona That You Ought To Visit | travelmagazine.com

MEALS ARE INCLUDED IN THE CONFERENCE REGISTRATION FEE

Registration

PROFESSIONAL MEMBER REGISTERED BY 11/15/23 <small>For conference fee included in membership</small>	\$245.00	REGISTER NOW
PROFESSIONAL NON-MEMBER REGISTERED BY 11/15/23	\$495.00	REGISTER NOW
EMERITUS MEMBER REGISTERED BY 11/15/23 <small>For conference fee included in membership</small>	\$210.00	REGISTER NOW
GRADUATE STUDENT MEMBER REGISTERED BY 11/15/23 <small>For conference fee included in membership</small>	\$200.00	REGISTER NOW
GRADUATE STUDENT NON-MEMBER REGISTERED BY 11/15/23 <small>For conference fee included in membership</small>	\$275.00	REGISTER NOW
ADMINISTRATIVE REGISTRATION <small>Administrative support</small>	FREE	REGISTER NOW

NAKHE Annual Conference Refund Policy:

2024 NAKHE Conference attendees: Here are some ways to EXPLORE PHOENIX! 😊



Scottsdale desert



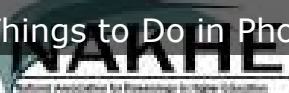
Horseback Riding



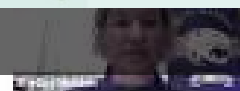
Play Golf



Things to Do in Phoenix, AZ (NAKHE 2024 Conference)



Things to do in Phoenix, AZ



1. Hike Camelback Mountain

- [Climb Camelback – Camelback Mountain Hiking Information | Phoenix, AZ](#)

2. Botanical Gardens

- [Desert Botanical Garden in Phoenix, Arizona \(dbg.org\)](#)

3. Phoenix Zoo

- [Home - Phoenix Zoo](#)

4. Old Town Scottsdale with shopping, restaurants, and pubs (11 miles or 23 minutes from conference hotel)

- [10 Fantastic Things To Do In Old Town Scottsdale | TravelAwaits](#)

5. Museums (Musical Instruments, Science, American Indian Art and others)

- [10 Best Museums In Arizona That You Ought To Visit! \(traveltiangle.com\)](#)



Meet our NAKHE Member of the month: Dr. Shari Jurgens

Dr. Shari Jurgens

Associate Professor

Affiliation: Trinity Christian College

Why are you a NAKHE member?

To learn from my peers and make connections with other Kinesiology Professionals.



NAKHE Member Highlight Form

The NAKHE Marketing Committee would like to highlight our members in our social media and newsletter! Please fill out the information [on this form](#) to be considered as our next featured member. If you have any questions, please contact Kanae Haneishi (the committee chair) at khaneishi@western.edu.

Thank you so much!

Sincerely,

NAKHE Marketing Committee



Get Published!

Please consider submitting an article to [#NAKHE](#) 's Journals-

IJKE -

<https://www.nakhe.org/submit-to-the-journal.html>

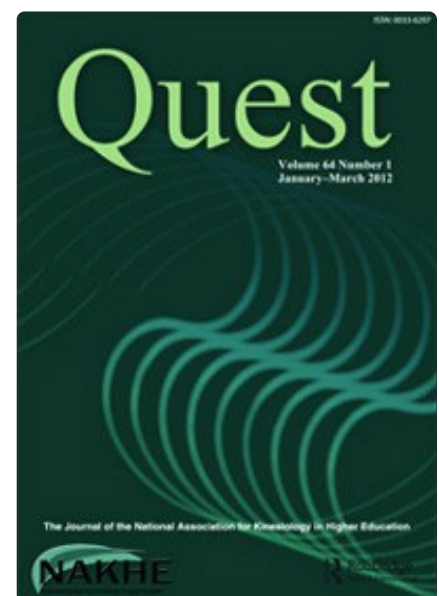
Quest -

<https://www.nakhe.org/submit-to-the-journal.html>



Featured Article

Tyler A. Wood, Nicholas E. Grahovec, Catrina M. Sanfilippo, Christopher Hill &



Featured Article

Jim Denison & Pirkko Markula (2023) Social Theory and Movement Skill Learning in

Elizabeth A. Gockel-Blessing
(2023) A Creative Medical
Investigation: Bridging the Soft
Skill Gap, International Journal
of Kinesiology in Higher
Education, 7:3, 219-230, DOI:
[10.1080/24711616.2022.2113347](https://doi.org/10.1080/24711616.2022.2113347)

Kinesiology, Quest, 75:2, 97-
102, DOI:
[10.1080/00336297.2023.2181830](https://doi.org/10.1080/00336297.2023.2181830)

OPERA (Opportunities in Physical Education and Related Areas) Jobs

Looking for a career move?

Check out the [NAKHE website](https://www.nakhe.org/) for current job openings at higher education institutions. The most recent position postings are listed below.



Head, Department of Kinesiology

The Pennsylvania State University (Penn State) College of Health and Human Development (HHD) seeks a visionary, collaborative, and inclusive leader to serve as the next Head of the Department of Kinesiology. Applications, inquiries, and nominations are invited.



Assistant/Associate Professor of Kinesiology

The School of Health and Kinesiology at the University of Nebraska at Omaha invites applications for a tenure-track faculty position at the rank of assistant or associate professor in Kinesiology.



UNIVERSITY OF MINNESOTA

Assistant Professor | Health Disparities & Kinesiology

The School of Kinesiology in the College of Education and Human Development at the University of Minnesota seeks to fill a tenure-tenure track Assistant Professor position.



#NAKHE

Please use Hashtag

#NAKHE

**We want to celebrate and
share your work**

Have Exciting News?

We have now a link for the members to send us their information for our social media: [Share Your News Here!](#) Our members can use this form to send us the information that they want us to announce on our social media. For example, if they are presenting at a conference, they can send us the information!



NAKHE Newsletter



The purpose of the NAKHE Newsletter is to send updated information to NAKHE members and friends. Much of the information overlaps with our social media sites. If you have any questions and comments, feel free to reach out to NAKHE at admin@nakhe.org.