

# NAKHE Newsletter

November 2021



## Register for the NAKHE 2022 Conference!!

The registration for the NAKHE 2022 Conference on **January 5 - 8, 2022** is currently open! The early registration (with the discounted rate) ends on November 1st. This year's conference will be held in Phoenix, Arizona. The conference theme is *Embracing the Future: Navigating a Hybrid World*.

The NAKHE conference is a great professional opportunity for Kinesiology scholars to build your network, reconnect with your colleagues, share your research and ideas, as well as learn up-to-date information!



**[Click HERE to Register for the NAKHE Conference](#)**



## **"What Are You Excited about the NAKHE 2022 Conference?"**

Find out what some of the NAKHE attendees are looking forward to at the NAKHE 2022 Conference in January!!



**Jody Langdon  
(Member since  
2011)**

*"I'm most excited about being able to see people in person. The NAKHE conference has long been the place I go to recharge, reconnect, and get excited about the spring semester. Being able to share ideas with colleagues in a welcoming environment has me counting down the days until January!"*



**Michael Oldham  
(Member since  
2019)**

*"I'm excited about the 2022 NAKHE Conference because it will give me a chance to meet new professionals, attend sessions that actually apply to my everyday teaching load, and make lasting connections in the NAKHE world. My first conference was in Palm Springs and I continue to collaborate with professionals I met on day 1! Phoenix should be amazing!"*



**Betty Block  
(Member since  
2007)**

*"I really need my NAKHE Fix! Getting together face to face with respected scholars and friends sustains me. The sessions are great, but the hallway conversations and social experiences beyond the planned conference program is what keeps me coming back to NAKHE. I look forward to playing with all my friends at the 2022 conference and getting my NAKHE Fix!"*





**Hal Wilson  
(Member since  
2012)**

*"I joined NAKHE in 2012 because it was highly recommended by my mentor, the late Dr. Joy DeSensi. I look forward to the conference every year because of the way the people of often different disciplines or sub-disciplines support and encourage each other. It is a fantastic organization whether you are new to higher education or you are more established. I am really looking forward to seeing everyone face to face after a year of virtual conferences."*



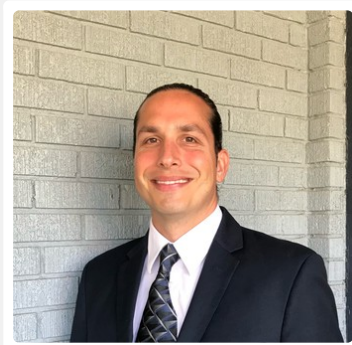
**Brian Culp  
(Member since  
2004)**

*"NAKHE is my favorite academic conference. In my experience, the yearly settings, structure, intimacy, and intellectual substance present an unrivaled combination. It is a wonderful way to network and learn about leadership in a supportive environment where professional development opportunities are exceptional."*



**Tsuyoshi  
Matsumoto  
(Member since  
2020)**

*"I will be attending the conference online from Japan due to the COVID-19 Pandemic. However, I very much look forward to introducing our research and discussing with scholars and graduate students from outside of Japan. I am also excited to learn more about how people become creative in sport and physical education outside of Japan, particularly through switching from in-person to online learning due to the Pandemic."*



### **Bob Knipe (Member since 2019)**

*"In such isolating times I am looking forward to being surrounded by colleagues who will challenge my thinking. As a doctoral candidate I also hope to build lifelong professional relationships that will help me grow in the areas of research, teaching and service."*



### **Martha James (Member since 2009)**

*"As I look forward to NAKHE's National conference, what makes me smile most is to be in the company of some of the most passionate professionals in the field. Our motto states that NAKHE is an organization "Where scholars come to lead." This guiding phrase is even more profound to me, given the challenges of the last 18 months. Whether you are joining in person or virtually, I am so excited to spend time with each of you!"*



### **Korey Boyd (A new member)**

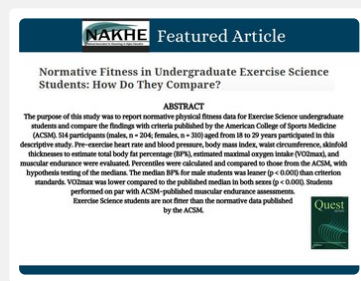
*"I am excited most to network with scholars and leaders in Kinesiology. Sometimes we get focused only on our scholarship and forget to collaborate and learn from those working in the field but in various capacities."*



### **What is around Hyatt Regency Phoenix?**

"Hyatt Regency gives you easy access to many of Phoenix's attractions and things to do in and near downtown Phoenix. Catch MLB Cactus League games, venture out to experience Heard, Phoenix Museum of Art and Arizona Science Museum, professional sports, the Desert Botanical Gardens or hike Camelback Mountain. Explore more in one of the Phoenix neighborhoods-Downtown, Roosevelt (RoRo), Central and Camelback Corridors, Biltmore, Scottsdale, and Tempe-home to ASU." For more information, click [here](#) for Hyatt Regency Hotel.

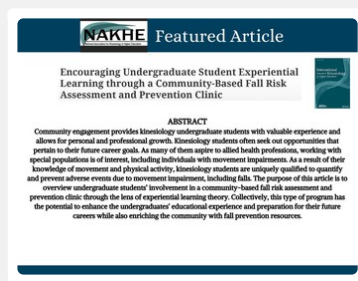
### **Featured Articles**



## Featured Article

Barton, A., Zabriskie, H. A., Moxley, J., & Blackshear, T. (2021). Normative Fitness in Undergraduate Exercise Science Students: How Do They Compare? *Quest*, 0(0), 1–15.

<https://doi.org/10.1080/00336297.2021.1994431>



## Featured Article

Wood, Richards, & Sosnoff (2021). Encouraging Undergraduate Student Experiential Learning through a Community-Based Fall Risk Assessment and Prevention Clinic. *International Journal of Kinesiology in Higher Education*, 5(1), 14–25.

<https://doi.org/10.1080/24711616.2020.1732249>



## Featured Article

Zuest, L., Lee, S.-M., Leedeman, J., Li, S., & Clifford, D. E. (2021). Promoting Body Size Diversity in University Recreation Centers. *Quest*, 0(0), 1–18.

<https://doi.org/10.1080/00336297.2021.1970594>



## Featured Article

Bunn, J. A. (2021). A Review of Research and Organizational Efforts for Diversity, Equity, and Inclusion in Kinesiology. *International Journal of Kinesiology in Higher Education*, 0(0), 1–8.

<https://doi.org/10.1080/24711616.2021.1975521>



## Featured Article

Block, B. A., Haneishi, K., Zarco, E., & Prados Megías, E. (2021). Thirdspace Movement Concepts in Physical Education Teacher Education. *Quest*, 0(0), 1–19.

<https://doi.org/10.1080/00336297.2021.1957691>



## NAKHE Publications

[IJKE](#) consists of peer-reviewed manuscripts, with a special focus on presenting the work of early-career professionals and graduate students.

[Quest](#) serves a broad readership that includes academicians, teachers, and administrators by providing a public forum for scholarly and creative thought about the profession.





## NAKHE Fellow Spotlight: Dr. Jesse Germain

A Professor at The U.S. Military Academy at West Point, Dr. Jesse Germain was inducted as the 43rd NAKHE Fellow in 2020.

Click [here](#) to learn more about Dr. Jesse Germain.



## NAKHE Fellow Spotlight: Dr. Emily Wughalter

A Full Professor at San Jose State University. Dr. Emily Wughalter was inducted as the 42nd NAKHE Fellow in 2019.

Click [here](#) to learn more about Dr. Emily Wughalter.



## NAKHE Fellows

NAKHE Fellows are "significant contributions to the field, including but not limited to scholarly productivity, leadership in the field of kinesiology or one's home institution, or other contributions listed in the nomination and award process." [Here](#) is the full list of NAKHE Fellows.



## NAKHE Fellow Spotlight: Dr. Van Der Mars

A Full Professor at ASU's Mary Lou Fulton Teachers College, Dr. Van Der Mars was inducted as the 47th NAKHE Fellow in 2021.

Click [here](#) to learn more about Dr. Van Der Mars.



## NAKHE Fellow Spotlight: Dr. Lynda Ransdell

A Dean for College of Health and Human Sciences at Northern Illinois University. Dr. Ransdell was inducted as the 46th

NAKHE Fellow in 2021. Click [here](#) to learn more about Dr. Ransdell.



## NAKHE Fellow Spotlight: Beth Hersman

A Professor at Wright State University, Dr. Johnson was inducted as the 44th NAKHE Fellow in 2020.

Click [here](#) to learn more about Dr. Hersman.





## NAKHE NEWSLETTER

 Facebook

 @NAKHEorg

The purpose of the NAKHE Newsletter is to send updated information to NAKHE members and friends. Much of the information overlaps with our social media sites. If you have any questions and comments, feel free to reach out to NAKHE at [info@nakhe.org](mailto:info@nakhe.org).

 [info@nakhe.org](mailto:info@nakhe.org)

 [nakhe.org/](http://nakhe.org/)

