

NAKHE Newsletter

May 2024

Proposals for 2025 NAKHE Conference are due July 1st! Click [here](#) to submit!

NAKHE 2025



ÚNICO Y CONECTADO | UNIQUE & CONNECTED

Consider the following content areas for proposal submission



2025 Annual NAKHEConference

January 5 - 8, 2025 in San Juan Puerto Rico
Unique and Connected – Único Y Conectado
Embracing Our Interdisciplinary Perspectives

1 of 4 Strands

Recruitment and Retention Strand offers opportunities to inform the field about current initiatives and research associated with recruiting and retaining students and/or faculty within the disciplines of kinesiology.

Recruitment and Retention

Offers opportunities to inform the field about current initiative and research associated with recruiting and retaining students and/or faculty within the discipline of kinesiology.

Policy and Advocacy

Encourages submissions related to policy and advocacy efforts within and across disciplines in kinesiology. Policy and advocacy can be considered broadly to include both formal and informal actions and/or initiatives.



2025 Annual NAKHEConference

January 5 - 8, 2025 in San Juan Puerto Rico
Unique and Connected – Único Y Conectado
Embracing Our Interdisciplinary Perspectives

2 of 4 Strands

Policy and Advocacy Strand encourages submissions related to policy and advocacy efforts within and across disciplines in kinesiology. Policy and advocacy can be considered broadly to include both formal and informal actions and/or initiatives.



2025 Annual NAKHEConference

January 5 - 8, 2025 in San Juan Puerto Rico
Unique and Connected – Único Y Conectado
Embracing Our Interdisciplinary Perspectives

3 of 4 Strands

Professional Standards Strand should highlight work being done to revise, improve, and or challenge standards within the disciplines of kinesiology. Issues associated with program revisions and accreditation fall within this strand.

Professional Standards

High work being done to revise, improve, and/or challenge standards within the disciplines of kinesiology. Issues associated with program revisions and accreditation fall within this strand.

Leadership and Administration

Provides opportunities to share best practices & research focused on fostering leadership and/or current issues within administration. Leadership and administration can be considered broadly to include both formal and informal leadership and administration roles.



2025 Annual NAKHEConference

January 5 - 8, 2025 in San Juan Puerto Rico
Unique and Connected – Único Y Conectado
Embracing Our Interdisciplinary Perspectives

4 of 4 Strands

Leadership & Administration strand provides opportunities to share best practices & research focused on fostering leadership and/or current issues within administration. Leadership and administration can be considered broadly to include both formal and informal leadership and administration roles.

Event Information

NAKHE 2025 Conference Proposal Submission

When?

Monday, Jul 1, 2024, 11:45 PM

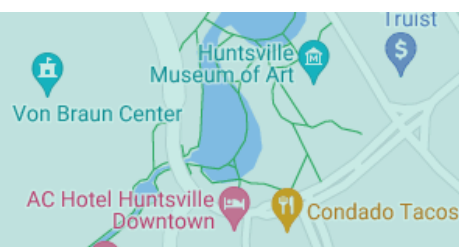
Leadership Development Workshop | July 10-12, 2024. Click flyer for more info!

Event Information

LDW Sign-up before Hotel Rate Expires!

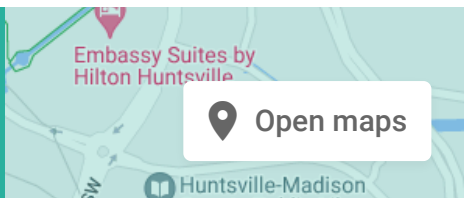
When?

Saturday, Jun 1, 2024, 07:00 AM



Where?

**AC Hotel Huntsville Downtown, Williams Avenue
Southwest, Huntsville, AL, USA**



 **Open maps**



NAKHE
National Association of Kinesiology in Higher Education

**2024
LEADERSHIP
DEVELOPMENT
WORKSHOP**

**THE UNIVERSITY OF
ALABAMA IN HUNTSVILLE**

University of Alabama in Huntsville

Leading Through Relationship Building

The NAKHE Leader Development Workshop (LDW) aims to develop young leaders by bringing together emerging and experienced leaders every year to participate in varied learning experiences and engage in insightful discussions on contemporary leadership issues in the field. NAKHE invites faculty, administrators, and doctoral students who are interested in moving into leadership roles to participate in the workshop.

**July
10 - 12,
2024**

More Information



Contact Us

Dr. Jeremy Elliott
Jeremy.elliott@uah.edu

NAKHE National Association of Kinesiology in Higher Education
<https://www.nakhe.org/>

NAKHE

LDW Blooper Reel



Department Head Certification Training 2024! Click flyer for more info!

Event Information

DHCT Sign Up before Hotel Rates Expires!

When?

Saturday, Jun 1, 2024, 07:00 AM

Where?

AC Hotel Huntsville Downtown, Williams Avenue Southwest, Huntsville, AL, USA



NAKHE 2024 DEPARTMENT HEAD CERTIFICATION TRAINING



Department Head Certification Training

NAKHE's strategic plan clearly articulates an investment in "creating and sustaining leadership opportunities for members." Many new department heads (DH) and other leaders have little to no training before stepping into their roles. Similarly, there are few discipline-specific comprehensive leader training programs designed for the unique challenges faced by kinesiology administrators. Therefore, as part of its Leadership Institute, NAKHE developed a year and a half training and support program for kinesiology administrators and those aspiring to assume the role of department head.

July 10 - 12, 2024

More Information



Contact Us

Dr. Mark Tillman
mtillma3@ju.edu

NAKHE National Association for Kinesiology in Higher Education
<https://www.nakhe.org/>



A note from the NAKHE President, Dr. James Hannon

Hello NAKHE family:

I am sure this has been a busy time for most members as we have all been wrapping up our academic years. It is a great time to reflect on everything you have done professionally over the academic year, celebrate, and then take a breath. Be sure to set aside time to rest and do things you enjoy doing the summer. Take care of yourself if you want to be your best for those around you! However, please



consider building in a trip to Huntsville, AL in July for our LDW and DHCT and remember to submit your proposals for the 2025 annual conference in beautiful San Juan, Puerto Rico.

2025 ANNUAL NAKHE CONFERENCE UNIQUE AND CONNECTED – EMBRACING OUR INTERDISCIPLINARY PERSPECTIVES ÚNICO Y CONECTADO

The 2025 Annual NAKHE Conference will be held January 4-8, 2025, in San Juan, Puerto Rico. The conference hotel is the **Royal Sonesta San Juan**. [You can make your reservations at NAKHE's group rate here.](#)

Call for Nominations for President-Elect, Vice President & Secretary



Are you interested in one of these positions, or perhaps you know another NAKHE member who you believe would be great at one of these positions? If so, please email the Nominations and Elections Committee Chair (Beth Hersman - bethany.hersman@wright.edu) with your nomination or any questions. Self-nominations are welcomed. Clearly indicate your preferred contact email and office of interest. Please review each officer position's respective NAKHE Operating Code (https://www.nakhe.org/operating_codes.html).



Meet our NAKHE Member of the month: Dr. Ken Bias

Position and Affiliation: Professor and Chair; University of Central Missouri

Motor Learning and Pedagogy

- NAKHE is family. New members may not realize how much of a family NAKHE is until they have been around a couple of years. As time goes on you realize how members are there to support you,

and help grow and develop into a leader in the profession. NAKHE is my professional home, where my family is there to support me.


NAKHE Members Accomplishments

Please complete the form below and let us know about your or a colleague's accomplishment(s). After screening by the Marketing Committee, we will use the information to promote NAKHE members on our social media.

Example accomplishments are:

- Awards
- Presentations
- New positions

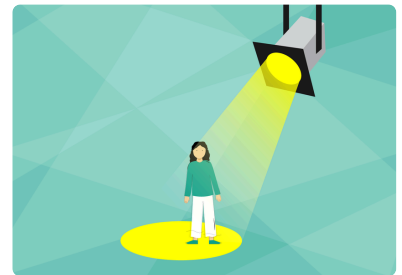
patresenesbitt@gmail.com [Switch account](#)

 Not shared

* Indicates required question

NAKHE Member Highlight Form 🥳

The NAKHE Marketing Committee would like to highlight our members in our social media and newsletter! Please fill out the information form by [clicking here](#) to be considered as our next featured member. If you have any questions, please contact Kanae Haneishi (the committee chair) at khaneishi@western.edu. Thank you so much!



Sincerely,

NAKHE Marketing Committee

OPERA (Opportunities in Physical Education and Related Areas) Jobs

Looking for a career move?

Check out the [NAKHE website](#) for current job openings at higher education institutions. The most recent position postings are listed below.





Get Published!

Please consider submitting an article to [#NAKHE](#) 's Journals-

IJKHE -

<https://www.nakhe.org/submit-to-the-journal.html>

Quest -

<https://www.nakhe.org/submit-to-quest.html>

Featured Article

Langdon, J., Brady, A., & Botnaru, D. (2024). Need Satisfaction, Motivation, and Learning Strategies in Undergraduate Kinesiology Students. *International Journal of Kinesiology in Higher Education*, 1–20.

<https://doi.org/10.1080/24711616.2024.2335885>

Featured Article

Kim, Y., Kinder, C., Strittmater, G., & Richards, K. A. (2024). Apprenticeship of Observation in Kinesiology: Undergraduates' Perceptions of Faculty Roles. *Quest*, 1–19.

<https://doi.org/10.1080/00336297.2024.2329906>



Tag NAKHE



#NAKHE

Please use Hashtag

#NAKHE

We want to celebrate and share your work

[LinkedIn](#) | [Instagram](#) | [Facebook](#) | [Twitter](#)

Have Exciting News?

We have now a link for the members to send us their information for our social media: [Share Your News Here!](#) Our members can use this form to send us the information that they want us to

announce on our social media. For example, if they are presenting at a conference, they can send us the information!



NAKHE Newsletter



The purpose of the NAKHE Newsletter is to send updated information to NAKHE members and friends. Much of the information overlaps with our social media sites. If you have any questions and comments, feel free to reach out to NAKHE at admin@nakhe.org.

