

NAKHE NEWSLETTER

March 2023

NAKHE 2023 LEADERSHIP DEVELOPMENT WORKSHOP

Have you heard? Registration is open for the NAKHE's 2023 Leadership Development Workshop (LDW)! Join a workshop where the aim is to bring together new leaders with the experienced leaders to participate in various learning experiences and participate in thought provoking discussions and issues found in leadership. Please see the flyer on the right for additional information and registration. Interested? Click [HERE](#) to register for LDW!



How was the NAKHE 2023 Conference? - Jen Walton-Fisette



Dr. Jennifer Walton-Fisette



A MESSAGE FROM THE PRESIDENT

Dear Members,

One of the requests from our Town Hall meeting at the annual conference was an opportunity to engage with fellow members more frequently. As part of this request, earlier this year I distributed a survey to members requesting your participation in providing feedback on when we should do this and what we should talk about.

Well, after reviewing the survey, not surprisingly there was a wide range of days, times, and preferences. However, the most consistent request was Wednesday around lunchtime. Therefore, within the next week or so members will receive a zoom invite to our first meet and greet on Wednesday, March 1, at 1:00pm EST.

NAKHE doesn't function well without member support and leadership that listens. So I'm so thankful that members voice ideas, suggestions, and concerns, and that our Board of Directors listen and act accordingly. I look forward to seeing you at our first meet and greet soon!

Sincerely,

Timothy Baghurst, PhD
NAKHE President
tim.baghurst@nakhe.org



DR. DARYL SIEDENTOP'S LEGACY: A QUEST SPECIAL ISSUE ALERT

In this special issue of Quest, The National Association for Kinesiology in Higher Education attempts to capture the impact of Dr. Siedentop's contributions to the field and serve as a fitting dedication to the legacy that he created.

Please take time to review the articles from the special issue.

Ward, P., Ayvazo, S., & Iserbyt, P. (2023). Daryl Siedentop's Epistemological Lens, and His Influence on the Fields of Physical Education and Teacher Education. Quest, 0(0), 1–11.

<https://tinyurl.com/3vbecpwz>

Tinning, R. (2023). Siedentop: A Memoir of the Man from Pomerene Hall. Quest, 0(0), 1–10.

<https://tinyurl.com/ye23cytr>

Wallhead, T. L., & Ayvazo, S. (2023). A Tribute to Daryl Siedentop: A Visionary Leader of Physical Education and Sport Pedagogy. Quest, 0(0), 1–4. <https://tinyurl.com/5ekxyv79>



NAKHE NETWORKING SERIES #1

Making and Creating Connections



Join the President of NAKHE, Dr. Baghurst, and other NAKHE members on Zoom to discuss hot topics, finding ways to collaborate, make connections and work your network!

SAVE THE DATE!



**Wednesday, March 1st
1PM EST/10 AM PST**

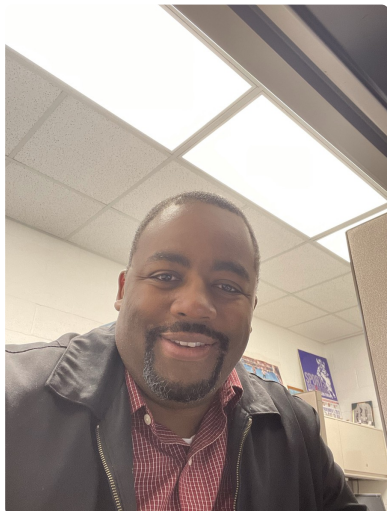
Scan Me to join!



Or follow the link to join: <https://rb.gy/hvhqgn>

Zoom Meeting ID: 96975013314
Passcode: 384101

Meet our NAKHE New Member of the month: Jason Perry



Jason Perry

Associate Professor | Sport Management

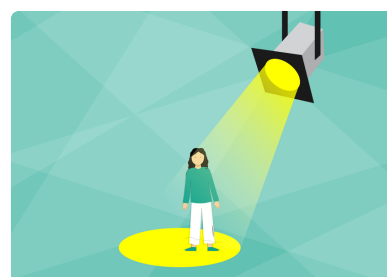
Affiliation: Howard University, Washington, D.C. USA

Research Interests: Diversity in Sport Management, Experiential Learning, Esports and HBCUs

Why are you a NAKHE member? To be a part of a professional organization that affords me the opportunity to connect, learn, and build with other likeminded professionals in the area of sport management and related disciplines.

NAKHE Member Highlight Form

The NAKHE Marketing Committee would like to highlight our members in our social media and newsletter! Please fill out the information [on this form](#) to be considered as our next featured member. If you have any questions, please contact Kanae Haneishi (the committee chair) at khaneishi@western.edu. Thank you so much!



Sincerely,

NAKHE Marketing Committee



Get Published!

Please consider submitting an article to [#NAKHE](#) 's Journals-

IJKE -

<https://www.nakhe.org/submit-to-the-journal.html>

Quest -

<https://www.nakhe.org/submit-to-quest.html>



Featured Article

Insook Kim, Bomna Ko & Daekyun Oh (2022).

Professional Development Policies and Practices for



Featured Article

Longxi Li, Michelle E.

Moosbrugger, Elizabeth M.

Mullin, Anni Wang & Michael Louis (2022). Targeting Well-

Developing Content Knowledge
of Physical Education
Teachers, International Journal
of Kinesiology in Higher
Education, DOI:
[10.1080/24711616.2022.2130843](https://doi.org/10.1080/24711616.2022.2130843)

Being and Physical Activity
through Sport Education in
Higher Education, Quest, DOI:
[10.1080/00336297.2022.2149416](https://doi.org/10.1080/00336297.2022.2149416)

NAKHE IS NOW ON LINKEDIN AND INSTAGRAM! GIVE US A FOLLOW AND USE #NAKHE

[LinkedIn](#) | [Instagram](#) | [Facebook](#) | [Twitter](#)



Tag NAKHE



#NAKHE

Please use Hashtag

#NAKHE

**We want to celebrate and
share your work**

Have Exciting News?

We have now a link for the members to send us their information for our social media: [Share Your News Here!](#) Our members can use this form to send us the information that they want us to announce on our social media. For example, if they are presenting at a conference, they can send us the information!



NAKHE Newsletter



The purpose of the NAKHE Newsletter is to send updated information to NAKHE members and friends. Much of the information overlaps with our social media sites. If you have any questions and comments, feel free to reach out to NAKHE at admin@nakhe.org.

