



NAKHE NEWSLETTER

June 2025

Hello NAKHE Colleagues and Friends and Happy June!

Dear NAKHE Family,

We hope this message finds you well and that you're finding moments this summer to rest, recharge, and reconnect with what brings you joy.

As we step into the season, we want to acknowledge the growing strain that the current political climate has placed on higher education across the United States. We are especially mindful of the stress this environment places on our international members and the very real concerns it raises around participating in academic conferences and collaborations here in the U.S.

Please know that your presence, your voice, and your work are deeply valued. NAKHE remains committed to supporting each of you in your academic and professional journeys. As a community, we are actively exploring ways to remain meaningfully connected, to foster inclusion, and to cultivate the leadership needed to navigate an increasingly complex and dynamic global landscape.

We are grateful for all that you contribute to this organization and to the broader field of kinesiology and higher education. Together, we will continue to grow, support one another, and shape a more hopeful future.

Together in strength, scholarship, and service,
Daniel



Registration deadline for 2025 Leadership Development Workshop (LDW) is 6/30!



LEADERSHIP DEVELOPMENT WORKSHOP

Bringing kinesiology leaders together to brainstorm solutions to some of the complex problems facing higher education.



 **July 6-8, 2025**

 **\$70 | Register by May 1**

 **Fairfield Inn & Suites**
16 Via De Luna Dr.
Pensacola, FL 32561


**UNIVERSITY of
WEST FLORIDA**

REGISTER NOW
www.nakhe.org

Sunday, July 6th
Evening Welcome Reception

Monday, July 7th
Breakfast (provided by hotel)
LDW activities
Lunch
LDW activities
Dinner

Tuesday, July 8th
Breakfast (provided by hotel)
LDW activities end at noon
Lunch
NAKHE Board Meeting 1-2 pm



2026 NAKHE Annual Conference -- Call for Proposals!

After a wonderful, record breaking 2025 NAKHE Conference in Puerto Rico, we are looking forward to our 2026 NAKHE Conference in Nashville Tennessee at the Marriott Vanderbilt. The theme is Harmonizing Voices: Building Cultures of Belonging and Excellence.

[The call for proposals is now open!](#) Conference Strands include:

- New Horizons in Kinesiology
- Mental Health and Burnout
- Cohesion and Belonging
- Leadership and Administration
- Other

We look forward to reviewing your submissions! **Proposals are due August 1st!**



-Lindsey Nanney, NAKHE Vice President | Conference Program Planner



DEADLINES EXTENDED to June 15!



Hellison Interdisciplinary Research Grant

The NAKHE **Hellison Interdisciplinary Research Grant Program** (IRGP) is administered through the Board of Directors and is designed to fund collaborative interdisciplinary research with the intent of connecting kinesiology researchers and researchers from disparate areas together in meaningful applied research. Individual grants will be funded up to \$5000 each.

Application deadline is June 15, 2025 ! [Click here](#)

- Requests for information and applications should be sent to Jennifer Didier at jjj017@shsu.edu

[Learn more here](#)



Leadership Mentor Program

The NAKHE Leadership Mentor Program (LMP) is designed to bring together members of the kinesiology community for a one-week “shadow” experience to build future leaders through hands-on mentoring and real-world scenarios. The program is also designed to build networking and social communication between university kinesiology departments from different locations inside and outside the United States.

One award shall be granted to two individuals (mentee and mentor). The total amount awarded for the grant is \$1800, the majority of which will fund the travel and housing costs for the mentee. Funds not used for travel or housing can be used as additional stipends.

Application deadline: June 15, 2025 ! [Click here](#)



Engaged Scholar Program

- This program establishes mentoring & networking opportunities in the area of scholarship for tenured associate professors with the intention of supporting their career moves through the promotion process at their own institutions. The ESP will provide financial support for NAKHE members to collaborate in scholarly endeavors with established senior scholars. The intent of the ESP is to encourage those recently tenured/promoted to continue their professional development efforts and move forward to the rank of professor in collaboration with a preferred NAKHE mentor/senior scholar.
- **Application deadline is June 15, 2025 ! [Click](#)**

should be sent to Jaime Mikell,
Leadership Mentor Program
Coordinator, at
jamie.mikell@athens.edu.

s for information
and applications should be
sent to Masoud
Moghaddam at
mmoghaddam@umes.edu

🌟 NAKHE Call for Award Nominations 🌟

NAKHE invites nominations for the Distinguished Administrator, Scholar, Service, and Teaching Awards. These prestigious awards are given each year at the NAKHE conference to honor and celebrate individuals who have dedicated their professional lives to the disciplines of Kinesiology, Physical Education, and higher education. The recipients will receive their awards at the 2026 NAKHE Conference in Nashville, Tennessee, on January 6-9, 2026.

The deadline for nominations & applications is August 1, 2025.

Please submit your nomination as soon as possible so that your nominee will have plenty of time to submit their application!



Questions concerning NAKHE Awards should be sent to Chris Wirth, Awards Committee Chair, at cwirth@uwf.edu.

Submit your nomination here

NAKHE Member Accomplishments

NAKHE Position(s)/Affiliations: Dr. Betty Block-Texas A&M Systems Regents Professor;
Dr. Kanae Haneishi-Associate Professor at Western Colorado University.

Contact Information: khaneishi@western.edu

Accomplishment: New Book Release: "The Thirdspace Movement Model: Connecting Movement with Social Justice" is available on Amazon [here](#).

Congratulations Dr. Block and Dr. Haneishi, as well as to the other contributors! 🎉

Connecting
Movement
with
Social Justice

BETTY A. BLOCK
KANAE HANEISHI

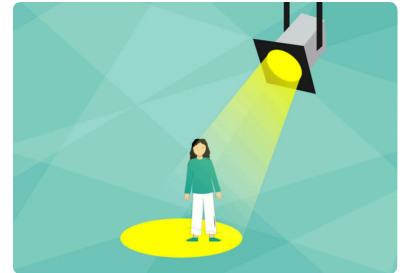
NAKHE Member Highlight Form 🎉

The NAKHE Marketing Committee would like to highlight our members in our social media and newsletter! Please fill out the information form by [clicking here](#) to be considered as our next featured member. If you have any questions, please contact Haley Blount (the committee chair) at blounth@nsula.edu.

Thank you so much!

Sincerely,

NAKHE Marketing Committee



OPERA (Opportunities in Physical Education & Related Areas) Jobs

Looking for a career move?

Check out the [NAKHE website](#) for current job openings at higher education institutions. The most recent position postings are listed below.





Tenure Track Position-- Exercise Physiology-- Assistant Professor

The Kinesiology and Public Health Department in the Bailey College of Science and Mathematics at California Polytechnic State University, San Luis Obispo, is seeking to fill one full-time, academic year, tenure track position in exercise physiology, with appointment beginning September 11, 2025.

Assistant/Associate Professor of Exercise Science

The Department of Exercise Science at Campbell University invites applicants for a tenure-track position at the level of Assistant or Associate Professor. The area of specialization is open, but should preferably align with, or complement existing departmental expertise with qualifications to teach in at least two the following areas: **biomechanics, motor learning, anatomical kinesiology, exercise physiology, strength and conditioning and human performance.**

Do you have an open faculty position?

Posting on OPERA is free to NAKHE members AND institutions employing NAKHE members! Click the [link](#) to learn more.



Get Published!

Please consider submitting an article to [#NAKHE](#) 's Journals-

IJKE -

<https://www.nakhe.org/submit-to-the-journal.html>



Featured Article

Bauer, P. W., Newsome, A. M., McAvoy, C. R., & Battista, R. A. (2025). EIM-OC: Beyond the Launch, Creating an Impactful, Sustainable and Supported Program. *International Journal*



Featured Article

Egan, C. A., Merica, C. B., McKown, H. B., & Orendorff, K. L. (2024). "We Try and Make it Work": Physical Education Teacher Education Faculty Perspectives of CSPAP

Quest -

<https://doi.org/10.1080/24711616.2024.2436226><https://doi.org/10.1080/00336297.2024.2446853><https://www.nakhe.org/submit-to-quest.html>

Tag NAKHE



#NAKHE

Please use Hashtag

#NAKHE

We want to celebrate and share your work

[LinkedIn](#) | [Instagram](#) | [Facebook](#) | [Twitter](#)

Have Exciting News?

We have now a link for the members to send us their information for our social media: [Share Your News Here!](#) Our members can use this form to send us the information that they want us to announce on our social media. For example, if they are presenting at a conference, they can send us the information!



NAKHE Newsletter



The purpose of the NAKHE is to provide
the information overlaid on the map
out to NAKHE at admin@nakhe.org.



👁 20

and friends. Much of
, feel free to reach

Created with  **smore**

Communicate quickly and effectively with interactive newsletters.

Smore empowers educators to connect with their community, streamline school communications, and increase engagement.

[Create a newsletter](#)

